



Kairos Autonomi
498 W. 8360 S.
Sandy, Utah 84070
801-255-2950 (office)
801-907-7870 (fax)
www.kairosautonomi.com

BULLETIN
BUL-057

Stryker Installation Notes

Introduction

This document provides minimal textual and photographic notations from a successful Stryker Bracket Kit (p/n MCA-00114) installation. This document does not provide a detailed installation procedure. Furthermore, this document addresses only Stryker Bracket Kit specific elements and electrical integration; installation of other components are covered in their respective documentation.

The Stryker brackets themselves have three primary connection types:

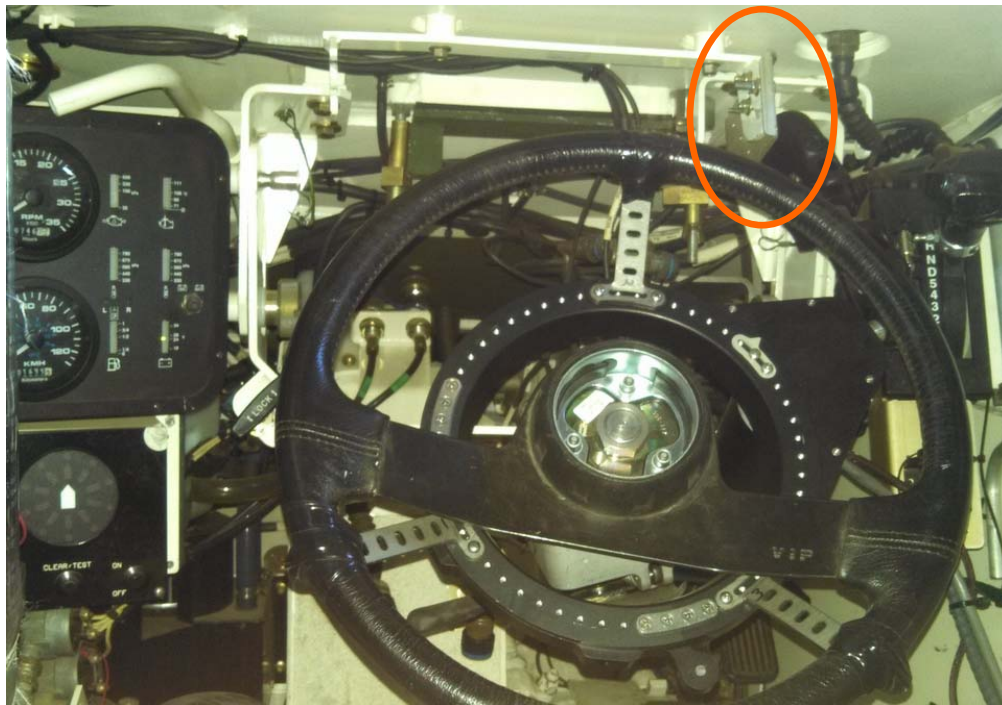
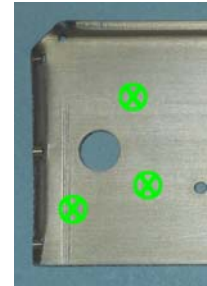
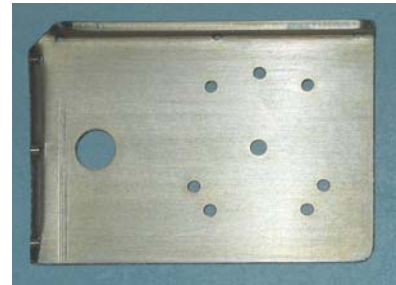
- Large holes are for reuse of existing vehicle hardware.
- Small holes on a grid are mounting fields for standard Pronto4 Brackets (e.g., Brake Bracket, Transmission Cable Bracket).
- Small holes in a circle are for the Steering Ring RAM Mount.

Stryker Steering Bracket

The Stryker Steering Bracket (p/n MCH-00456) is secured to a rotational plate mount above and slightly to the right of the steering wheel.

The Stryker Steering Bracket needs to be manually positioned, then, with the use of a permanent marker, mark the opening of the rotational plate. Drill three 1/4" or 6mm holes into the Stryker Steering Bracket that correspond with the locations indicated. Secure the Stryker Steering Bracket to the rotational plate mount with three (3) 3/4" 1/4-20 bolts and corresponding nuts.

Secure a RAM Ball Mount (p/n HRD-00014) to the Stryker Steering Bracket. The RAM Mount 7.88" Clamp (p/n HRD-00416) is subsequently secured, and used as a triangulated mount point for the Steering Ring.



Stryker Transmission Bracket

The Stryker Transmission Bracket (p/n MCH-00454) secures to the inside of the shifter gear box. The Transmission Cable Bracket (p/n MCH-00268-01) is then attached to the mounting field.



Stryker Throttle Bracket

The Stryker Throttle Bracket (p/n MCH-00455) is secured to the floor under the throttle pedal, with the mounting field toward the engine compartment and edges curved up.

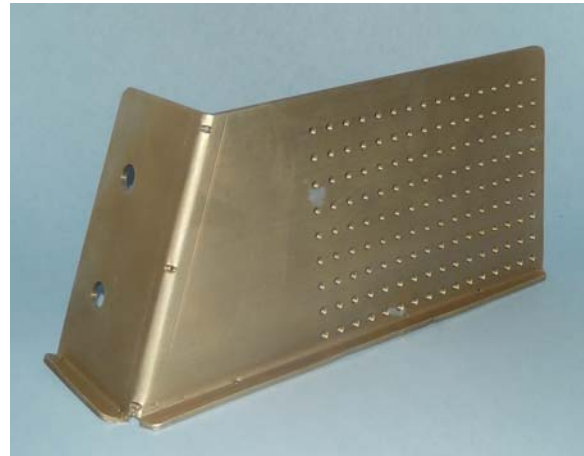
The Throttle Pedal Adapter (p/n KA-100-133-01) is secured to the mounting field.



Stryker Brake Bracket

As visible in the images below, the two large holes on the short face of the Brake Bracket (p/n MCH-00453) are used to secure the bracket to the vehicle.

The black Brake Cable Bracket (p/n MCH-00089-01) is also visible in both images to the left rear of the brake arm. Note that the Brake Cable Bracket is attached to the Brake Bracket's mounting field.

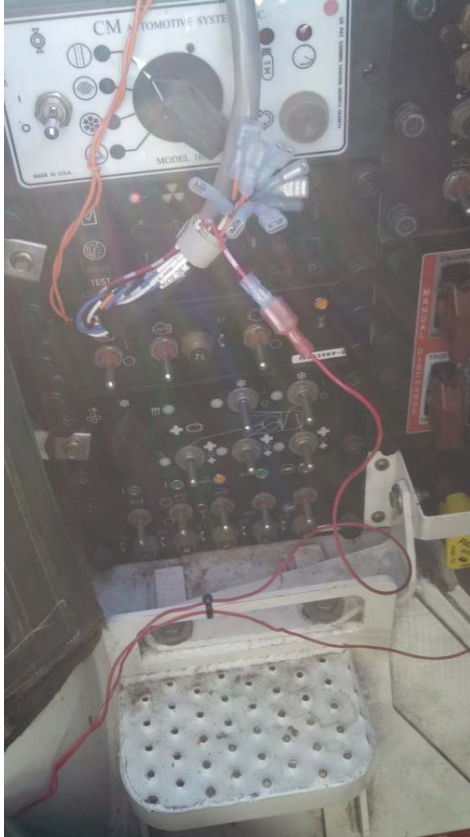


In addition two (2) 33-57mm hose clamps (p/n HRD-00444) and the pivot bar from the Brake Attachment Kit (p/n 3RD-00010-01) are used to connect the brake arm to the Brake Cable's sheath.

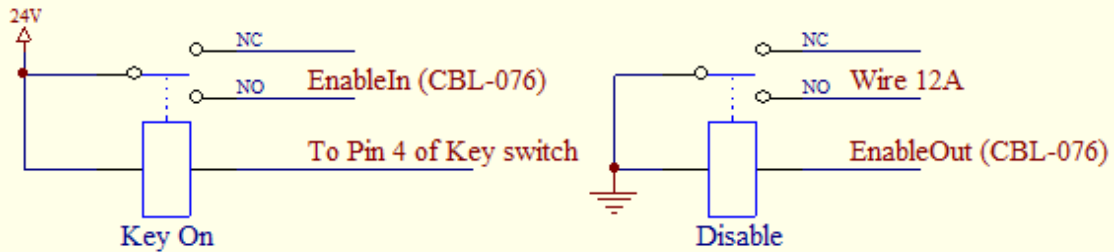


Electrical

Images and schematic for reference.



LAV-III Electrical Integration



Disconnect wire 12A from pin 4 of the key switch
GND comes from pin 5 of the key switch, also connected to wire 13B and 13D

