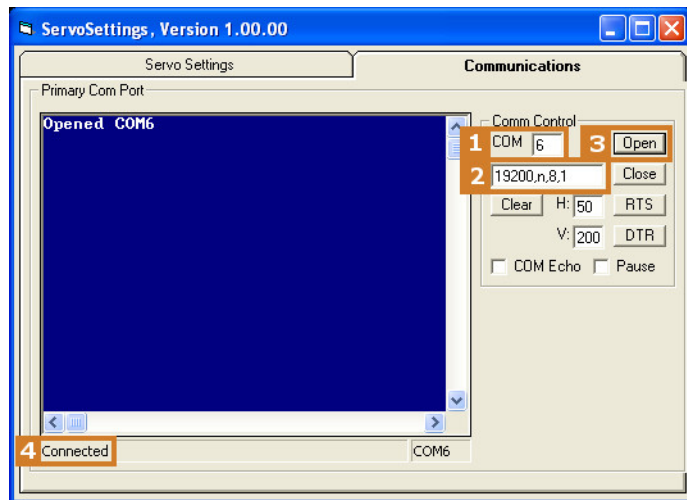


Servo Settings Executable – Altering Brake Min & Max

This document provides the procedure to alter the minimum and maximum set points of the Brake Servo in an installed Pronto4 Series 4.

1. Start with a fully connected and powered Pronto4 Series 4 unit, with either a Vehicle Integration Module (VIM) or VIM Test Board.
2. On the Pronto4's computer (e.g., directly connected via a Utility Breakout Board, or VNC'd from an OCU), click the Window's **Start** button, then **Run....** At the "Run" prompt, verify and select or type in "devmgmt.msc". Click the **OK** button. The "Device Manager" screen should open.
3. Expand the "Ports (COM & LPT)" section. Double-click on the "USB Serial Port (6)" entry. In the "USB Serial Port (6) Properties" window, click on the "Details" tab. On the "Details" tab, ensure the drop-down is set to "Device Instance Id".
4. For a standard Kairos Brake Module, verify the Device Instance Id is: "FTDIBUS\VID_0403+PID_6001+**700-01-0A**\0000". If the installation has a standard Kairos Brake Module, but the Device Instance Id does not match, identify the "USB Serial Port #" that does match, and use that Port's COM number instead of the standard COM 6.
5. Open C:\GC07\Servosettings.exe.
6. On the "Communications" tab, in the "Comm Control" area, ensure the COM port is set to "COM 6" (or other COM port identified in step 4).
7. Still in the "Comm Control" area, to the left of the **Close** button, ensure the communications settings are "19200,n,8,1". Click the **Open** button.
8. Below the blue terminal area, verify communications are "Connected".
9. On the "Servo Settings" tab, in the lower-right corner, check the "Continuous Read" option (see image on next page). System variables should start updating in near real-time.
10. Note the starting values for:
 - a. Setpoint Min: _____
 - b. Setpoint Max: _____



11. Based on the current Setpoint Min and Setpoint Max values and desired min and max locations, estimate the necessary values. Input the values in appropriate fields and click the **Apply** button.
12. Switch the VIM to Auto to see the currently applied Setpoint Max.
13. Switch the VIM to Manual Override (if using a VIM test board, press the "Override" button) to see the currently applied Setpoint Min.
14. Repeat steps 12-14 until the desired positions have been applied.
15. When the desired positions have been applied, click the **Save** button. Close the ServoSettings.exe application. Reboot the Pronto4 Series 4.
16. Verify the settings prior to subsequent operations.

