

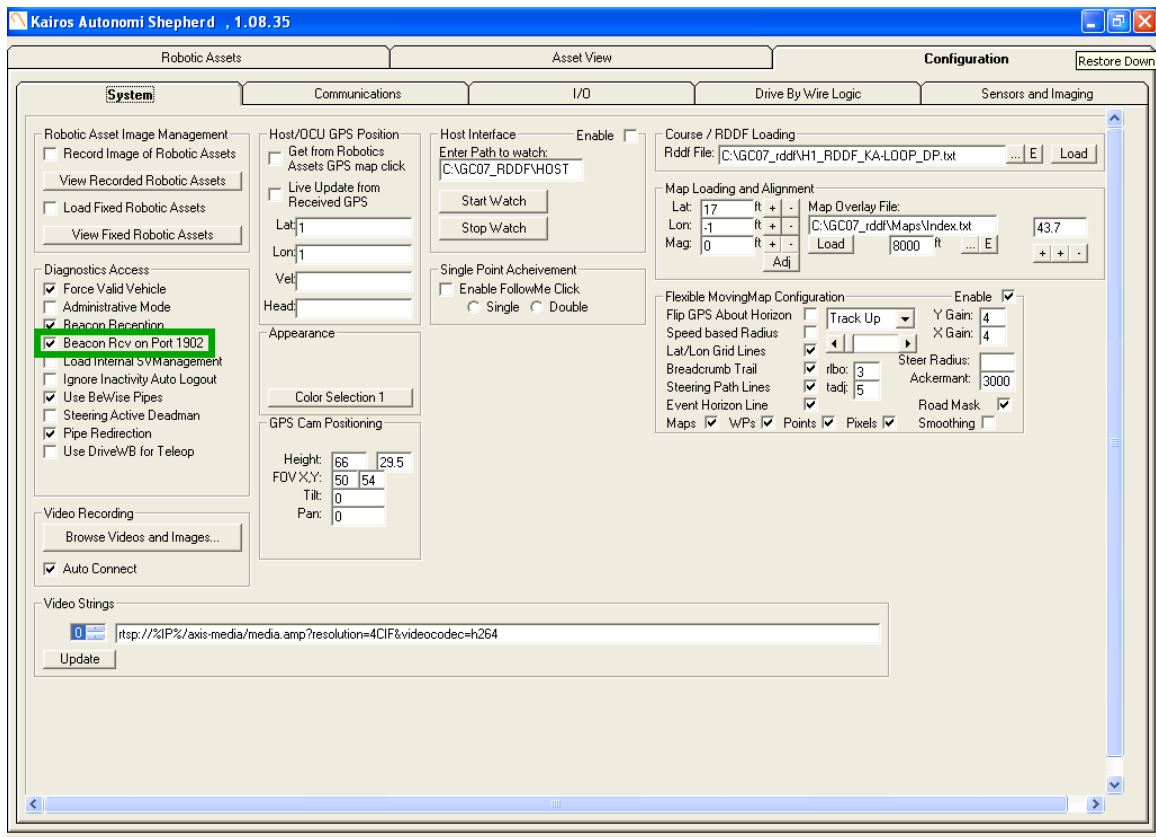
## Installing Shepherd Software on an OCU

### Introduction

The primary operator control software for Kairos systems is Shepherd. On Operator Control Units (OCU) that Kairos provides, Shepherd comes preinstalled. This procedure documents the installation process for customers that provide their own OCU, or want the ability to reload the software.

### Procedure

1. Insert the provided DVD or Thumb drive into the target computer.
2. If the install screen does not appear automatically, navigate to and double-click:  
E:\IVN-v1.8-Setup-OCU.exe
3. When notified, "You are using an old installation. Would you like to continue anyway?", click "Yes".
4. On the main screen, click the "Next >" button.
5. On the "Choose Components Screen" ensure all of the checkboxes are checked, except for the "Backup" checkbox, then click the "Install" button.
6. The installer will run for a few minutes. During this period the "djBISTro" window will appear and disappear. If a notification about "The following file is already installed on your computer" appears, click the "Yes to All" button.
7. On the "Welcome" screen (the background will have turned blue), click the "Next >" button.
8. On the "Software License Agreement" screen, click the "Yes" button.
9. On the "Readme Information" screen, click the "Next >" button.
10. On the "Choose Destination Location" screen, leave the default path and click the "Next >" button.
11. On the "Setup Type" screen, leave the default value of "typical" and click the "Next >" button.
12. On the "Select Program Folder", leave the default value of "DLPortIO" and click the "Next >" button.
13. On the "Start Copying Files", click the "Next >" button.
14. The installer will run for a few minutes.
15. When the first "Setup Complete" screen appears, select the "No, I will restart my computer later" option, then click the "Finish" button.
16. On the second "Setup Complete" screen, click the "Finish" button.
17. The installer will run for a few minutes.
18. When the command line window prompts, "Press any key to continue..." press the "Enter" key.
19. The install will run for a few minutes, during which time the command line window will open and close twice.
20. On the "Pronto4 Software Suite IVN-v1.8 Setup Wizard" screen, click the "Finish" button.
21. Close the "DLPortIO" explorer window. The main "v1.8" installation is complete, but the "T8" patch must still be installed.
22. Navigate to and double-click E:\Releases & Patches\IVN.v1.8T8.Patch\install.bat.
23. The installer will run for a few minutes.
24. When the command line window prompts, "Press any key to continue..." press the "Enter" key.
25. Close the IVN-v1.8T8.Patch window.
26. Restart the computer. The installation process is complete, but an additional configuration change must be made.
27. When Shepherd is fully loaded, navigate to the "Configuration" tab and "System" sub-tab. Under the "Diagnostics Access" area, ensure the "Beacon Rcv on Port 1902" checkbox IS checked (see screenshot on next page).
28. In djBasis, on the "Systems" tab, in the lower-right corner, update the "Vehicle Name" entry to "OCU\_SN###" where the ###s are the last three digits (i.e. octet) of the OCU's IP address.
29. The Kairos software package, with Shepherd, is now fully installed.



## Contact Information

Kairos Autonomi  
498 West 8360 South  
Sandy, Utah 84070 USA  
801-255-2950 (office)  
801-907-7870 (fax)  
www.kairosautonomi.com