

This procedure documents how to log communications between two systems running Kairos Autonomi's SharedLink protocol.

Prerequisites

Two systems communicating via SharedLink protocol and at least one of those systems running djSharedLinkF.

Procedure

- 1 Restore the djSharedLinkF executable.
- 2 Change to the 'Serial Data Link' tab and check the box labeled 'Log'. This will append all sent and received communications to the file 'djSharedLinkF.log' located in the same directory as the djSharedLinkF.exe executable. (Normally 'C:\GC07\djSharedLinkF.log') as long as it is checked.

Note: The file is flushed and closed once that box is unchecked. If the program is closed abnormally, before the box can be unchecked, logged data may be lost or corrupted.

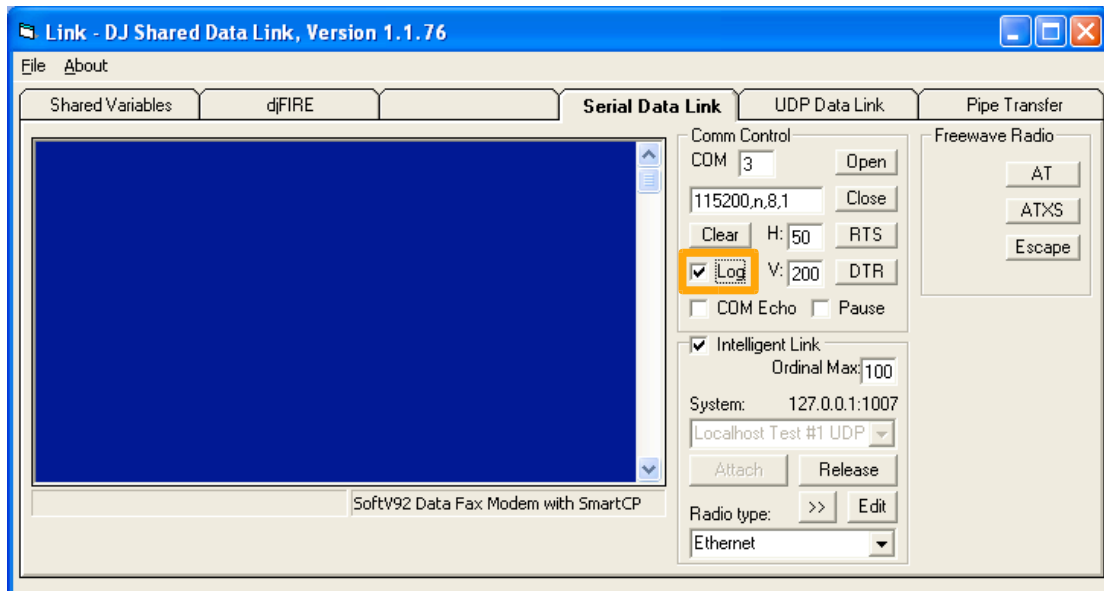


Figure 1: djSharedLinkF "Serial Data Link" tab, with "Log" button highlighted.

